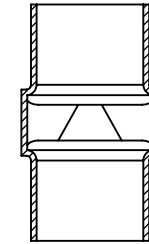
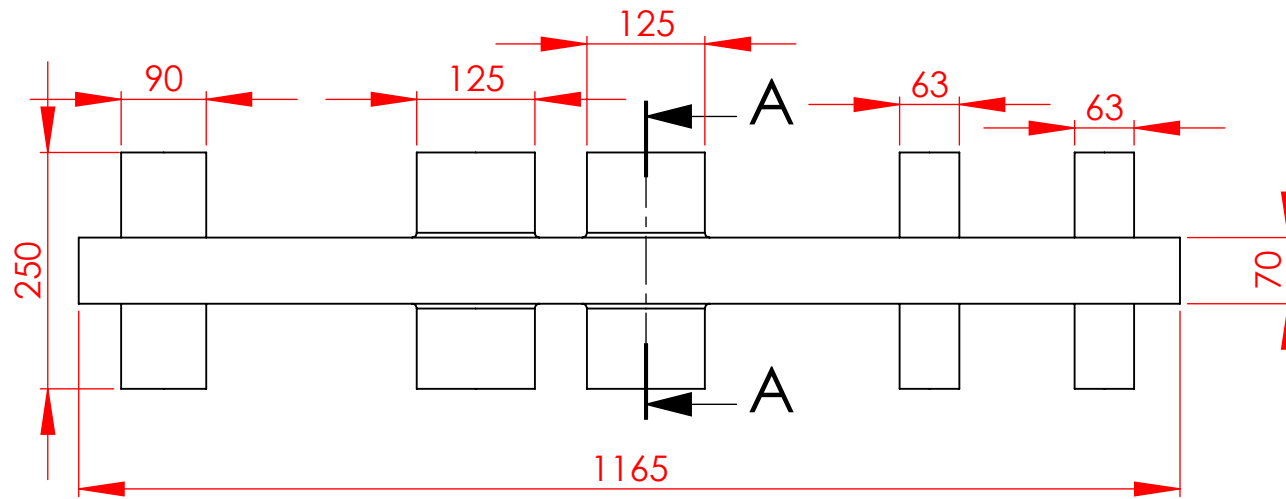
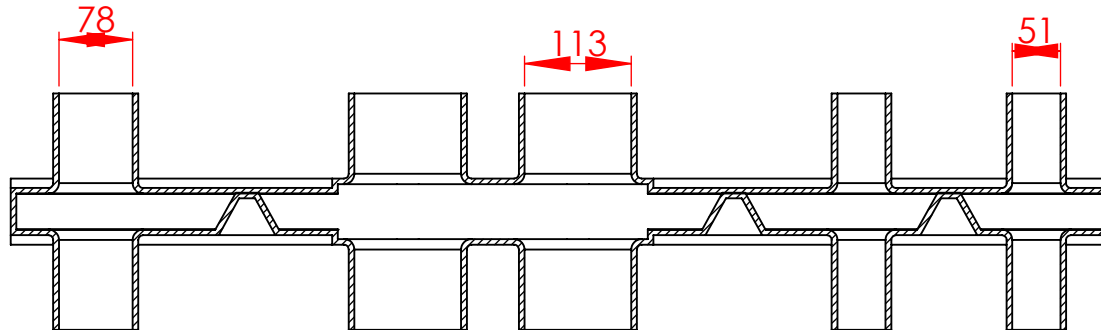
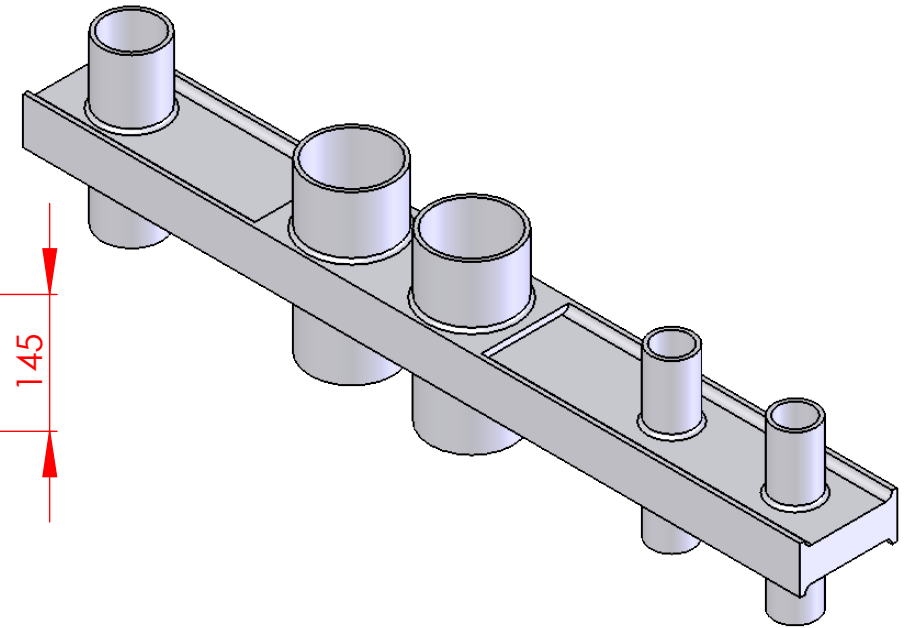
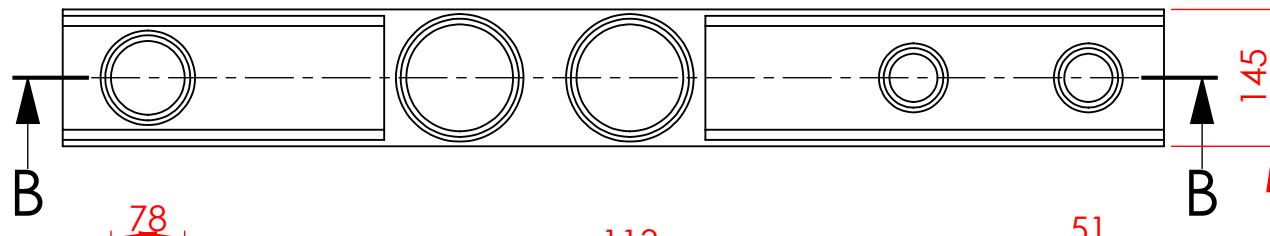


# Gólfmát, hverfisteyptur




SECTION A-A



SECTION B-B

Approval

UNLESS OTHERWISE SPECIFIED DIMENSIONS ARE IN MILLIMETERS. TOLERANCES ARE: DECIMALS 2%		MATERIAL		 <a href="http://www.saeplast.com">www.saeplast.com</a> <a href="mailto:saeplast@saeplast.is">saeplast@saeplast.is</a> <small>Gunnarsbrú 12, Dalvík, Ísland Tel +354 460 5000 Fax +354 460 5001</small>		
		FORM				
		MATERIAL SIZE				
		COMMENT				
DO NOT SCALE DRAWING FIRST ANGLE PROJECTION	PROCESS	FINISH	DESCRIPTION ---			
CAD GENERATED DRAWING. DO NOT MANUALLY UPDATE.	PRODUCTION GROUP	SPAREPART				
DESIGNED BY -	DATE -	DRAWN BY -	DATE -	REPLACES		REPLACED BY
CHECKED BY -	DATE -	CHECKED BY -	DATE -	SIZE A4	DWG NO.	REV.
SCALE 1:8				CAD FILE: Gólfmát		SHEET 1 OF 1

## SAEPLAST CONFIDENTIALITY AGREEMENT NOTICE:

INSOFAR AS THIS DRAWING EMBODIES A CONFIDENTIAL PROPRIETARY DESIGN OWNED BY SAEPLAST, NOTICE IS HEREBY GIVEN THAT ALL DESIGN, MANUFACTURING, REPRODUCTION USE AND SALES RIGHTS REGARDING THE SAME ARE EXPRESSLY RESERVED TO SAEPLAST. THIS DRAWING IS SUBMITTED UNDER A CONFIDENTIAL RELATIONSHIP FOR A SPECIFIC PURPOSE AND THE RECIPIENT HERETO AGREES NOT TO DISCLOSE THIS DRAWING OR ANY PORTION OF ITS CONTENTS TO ANY UNAUTHORIZED PERSON, OR TO INCORPORATE THIS PROPRIETARY DESIGN OR THE SUBSTANCE OF IT EITHER IN WHOLE OR IN PART IN ANY OTHER PROJECTS.